

AIC engine instruments assembly instructions.

Handle with caution, static sensitive devices.

Please only use good, stabilized powersupplies.

12 volt, 3 or 4 Amps switching computer powersupplies are good to use. The centerpin of the DC connector connects to the +.

Any damage, caused by using cheap, crappy powersupplies, and/or wrong polarizing is excluded from any warranty.

Painting needles



1. Paint the BACK-SIDE of the needle with a white enamel paint. Don't paint the frontside as this will make the backlighting useless.



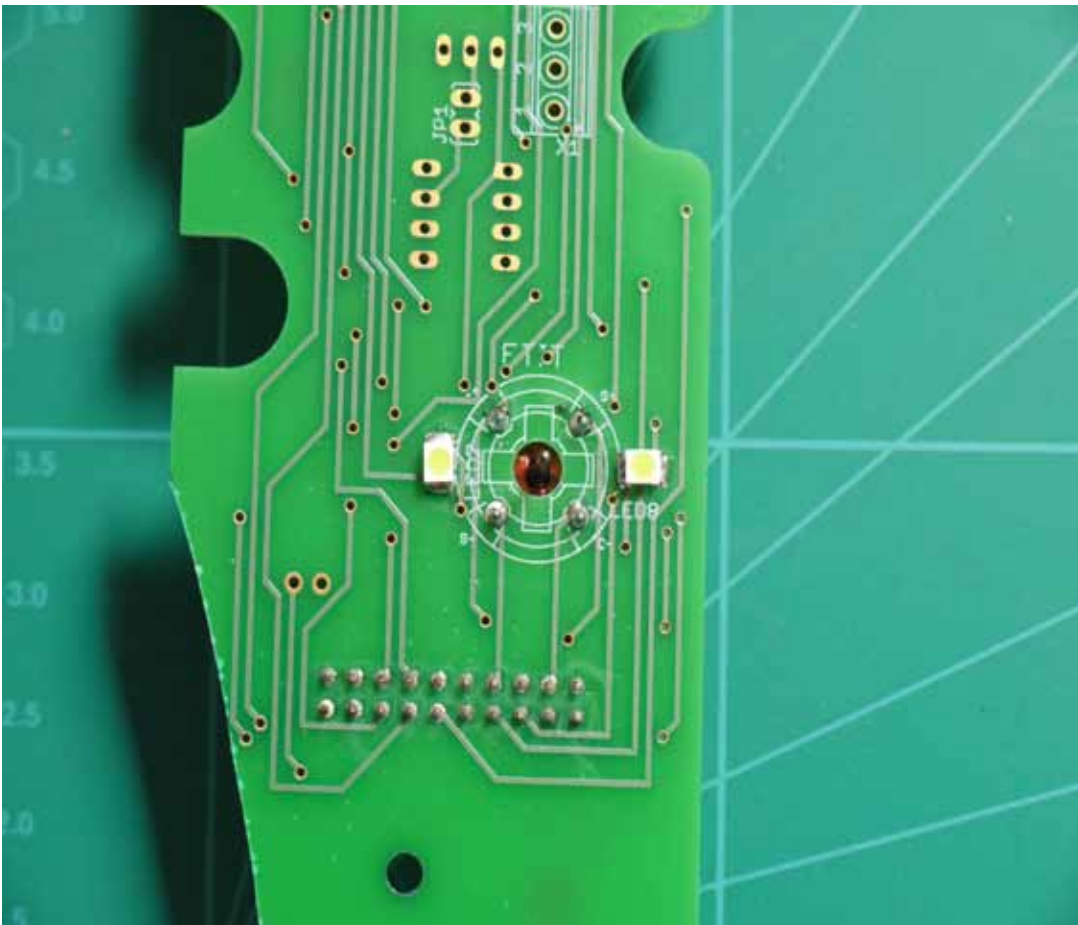
2. Paint the top circle black.
And ready is your needle, to be placed on the aircore.

Mounting the instrument plates



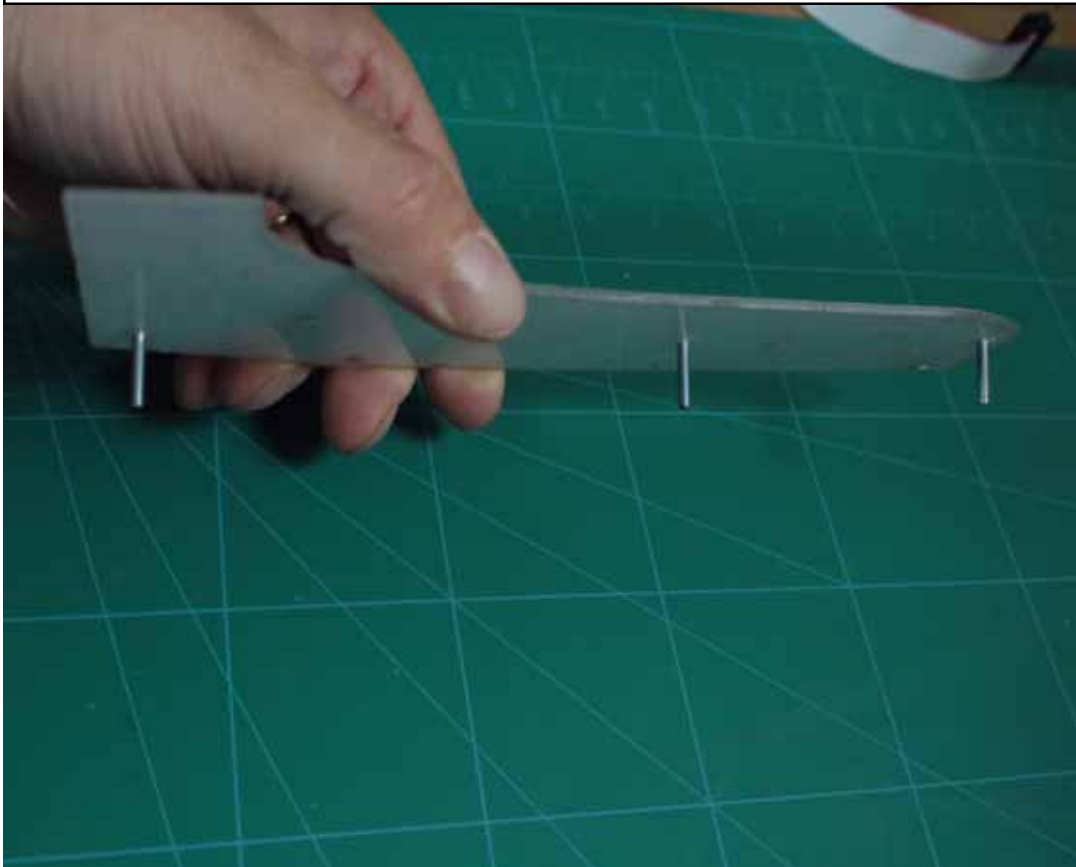
1. If you have ordered your AIC frontconsole set without aircores, you first have to solder your aircores into place.

Do this carefully, but proper. Mount them on the right side of the pcb.

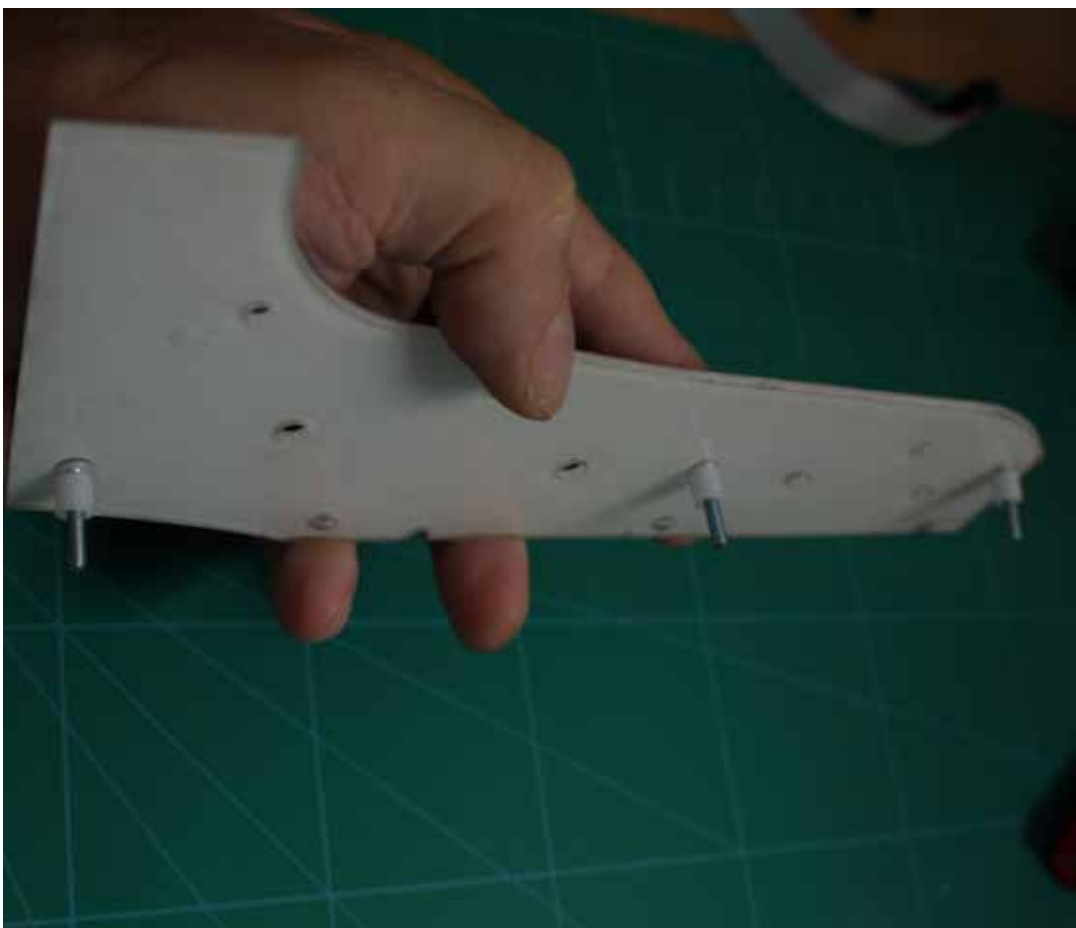


2. This is how it should look like if you have soldered them right.

Mounting the instrument plates



3. Now insert the three countersunk screws in the holes of the faceplate



4. Place the distance holders on the screws.

Mounting the instrument plates



5. Attach the aircores pcb. This can be a little difficult but if you keep your patiente nothing can go wrong.

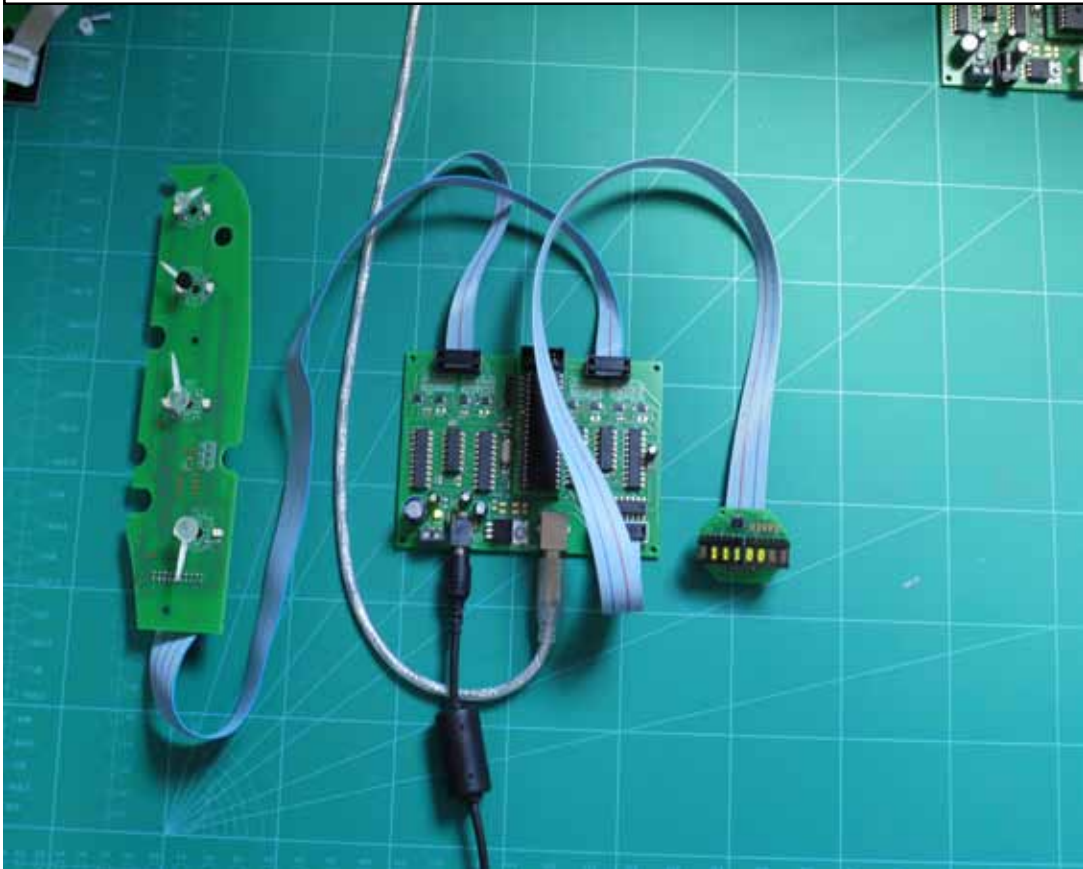


6. Mount the nuts on the screws and tighten them loosely.

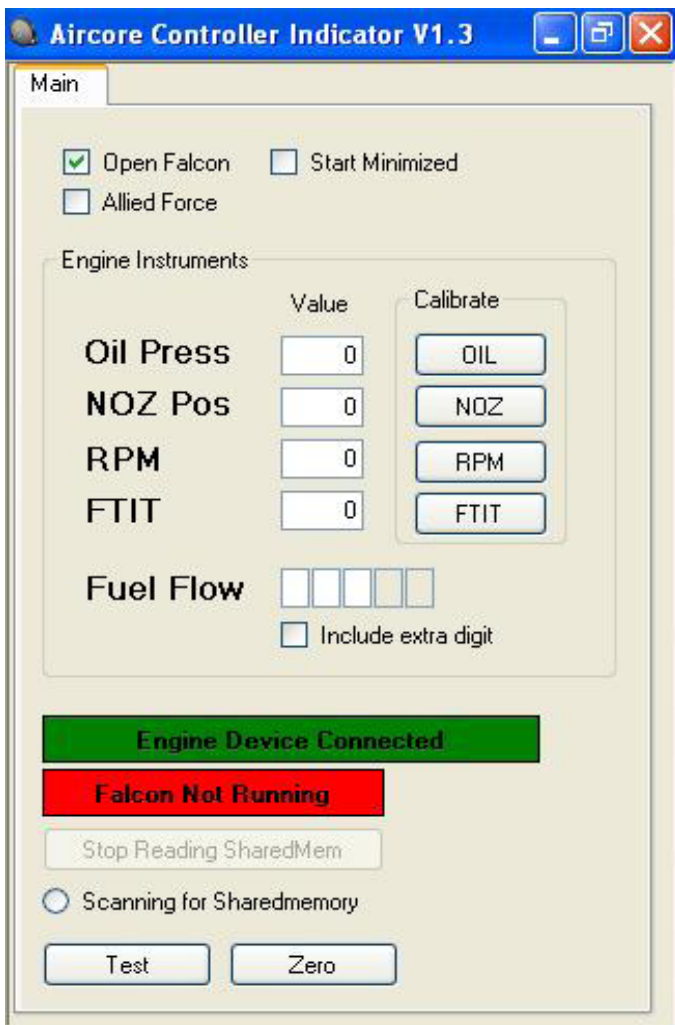
Make sure the needleshafts are centered in the holes.

Now Tighten the nuts to prevent further movement of the plates. Don't tighten to tightly, as this can damage the faceplate.

Mounting the instrument plates



7. Now connect all parts together. Power up the main pcb and connect the USB cable.



8. Install the AIC software in whatever directory you like. (C:\AIC is a good place) and start it up.

Check if the engine device connected box is green.

Now press the zero button to make sure all needles are zeroized. After this align your needles with the point at zero and carefully press them into place. **Make sure they can move freely after doing this.**

Check by removing power and rotating needles by hand. Any friction between the needle shaft and aircore plate should be avoided.

Mounting the instrument plates



9. This should be your result.



10. Now it's time to calibrate your instruments. This procedure is self-explanatory.

Just locate and press the calibrate button on the AIC main page.

After this you are ready.

Have fun.